



Smart Label Creator  
Install User's Guide

U00133108704

Seiko Instruments Inc.

## Smart Label Creator Install Guide

U00133108700 May 2014  
U00133108701 September 2014  
U00133108702 April 2015  
U00133108703 June 2015  
U00133108704 March 2016

Copyright© 2014-2016 by Seiko Instruments Inc.  
All rights reserved.

Seiko Instruments Inc. (hereinafter referred to as "SII") has prepared this manual for use by SII personnel, licensees, and customers. The information contained herein is the property of SII and shall not be reproduced in whole or in part without the prior written approval of SII.

SII reserves the right to make changes without notice to the specifications and materials contained herein.

**SII** ● is a trademark of Seiko Instruments Inc.

# Smart Label Creator Install Guide

The following information shows the Introduction of Smart Label Creator and related software (hereinafter referred to as "the software")

## Software Overview

---

The configuration of the software is shown as below. You can also select only a required software at installation. However, Printer Driver shall be installed.

- Smart Label Creator  
A software that enables you to quickly create and print labels of the SMART LABEL PRINTER®.
- Import DB to Smart Label Creator  
A software that you can import specific data of Microsoft® Word®, Excel®, Outlook®, and Access® into the database of the Smart Label Creator
- Copy Text to Smart Label Creator  
The software resides in the Windows taskbar and allows you to import text data selected in web browsers, e-mails, etc. into the Smart Label Creator.
- Software Development Kit (hereinafter referred to as "SDK")  
Libraries that provide printing functions of the SMART LABEL PRINTER®. SDK is used from a application created by user.
- Printer Driver  
A printer driver that is used by above software. It is also used for printing from general-use applications.
- TechnicalSupport  
A software that automatically acquires statuses, information, and data when trouble occurs with the Smart Label Creator, and then saves it all as a technical support analysis file.

## Operating Environment

---

The following describes the operating environment of the software.

### Host Environment

- Microsoft® Windows Vista® (32bit / 64bit)
  - Microsoft® Windows® 7 (32bit / 64bit)
  - Microsoft® Windows® 8 (32bit / 64bit)
  - Microsoft® Windows® 8.1 (32bit / 64bit)
  - Microsoft® Windows® 10 (32bit / 64bit)
  - Mac OS® X 10.6 (32bit / 64bit)
  - OS X® 10.7 (32bit / 64bit)
  - OS X® 10.8 (64bit)
  - OS X® 10.9 (64bit)
  - OS X® 10.10 (64bit)
  - OS X® 10.11 (64bit)
- ✓ Note
- Hereinafter, Host Environment is abbreviated as "Windows" or "Mac OS".
  - Software install/uninstall require administrator privileges.

## **Supported Printer Model**

- Smart Label Printer 650SE
- Smart Label Printer 650
- Smart Label Printer 620
- Smart Label Printer 450 \*1
- Smart Label Printer 440 \*1

\*1 For using Smart Label Printer 450/440, custom install is needed. See the following "Install" for details.

## **Supported Port**

- USB Port
- Serial Port (COM Port)

# Install

The following describes how to install the software.

## Windows version (Normal installation)

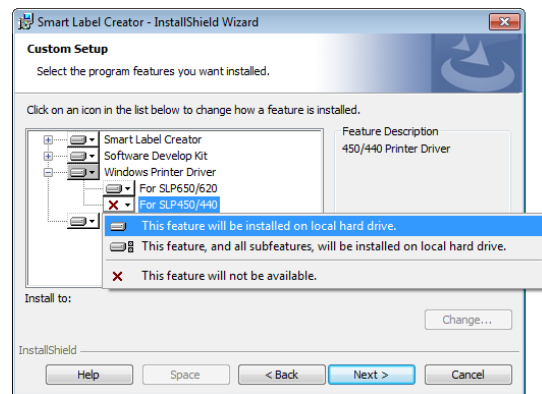
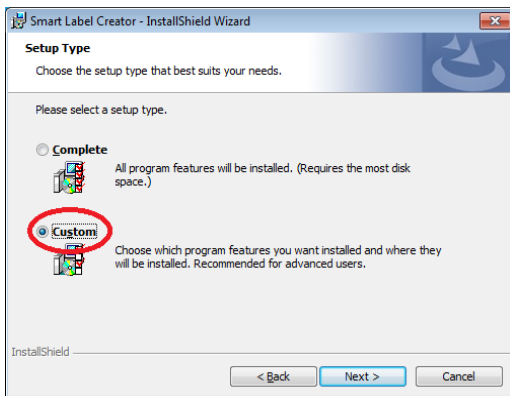
Insert Smart Label Creator CD. The installation wizard starts automatically on most systems. If the introductory screen doesn't appear after a few seconds, Install program (setup.exe) that exists in the root folder of CD is started directly.

Proceed with the installation according to the wizard when the installation program launched.

### For using Case Smart Label Printer 450/440

Select [Custom] on [Setup Type] of install wizard.

Change the setting from "For SLP450/440" to install side as follows in the dropdown list displayed on the next screen.

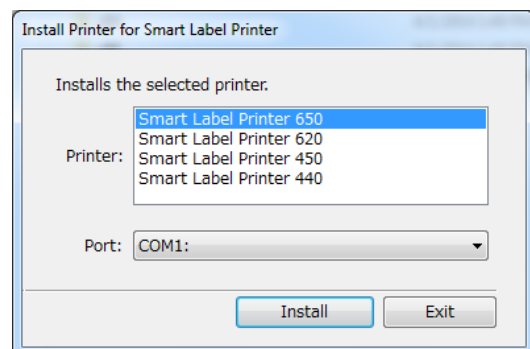
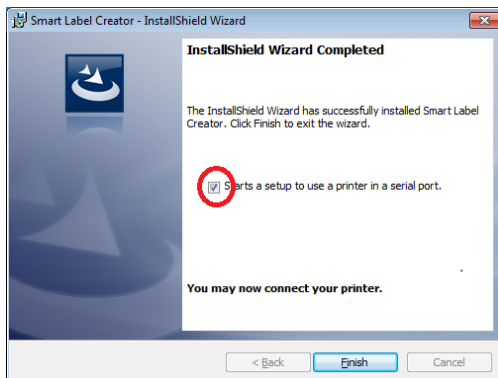


### For using Printer with USB Connection

Windows will automatically set up your printer when it is connected.

### For using Printer with Serial Connection

Select the check box on the last screen of the installation as follows. When you select the [Finish] button, setup screen for serial connection is displayed. Select a printer name and connection port.



## **Windows version (Silent Installation)**

To perform silent installation, execute the following commands.

- \x86\setup32.exe /s /v"/qn" (32bit version)
- \x64\setup64.exe /s /v"/qn" (64bit version)

✓ Note

When connecting serial port or using Smart Label Printer 450/440, silent installation cannot be used.

## **Mac OS version**

1. Insert the Smart Label CD. When the installer does not appear automatically, double-click the CD on your desktop.
2. Double-click the file SmartLabelPrinter.pkg. The installer will appear. Follow the on-screen instructions.
3. Mac OS will automatically set up your printer when it is connected.

✓ Note

Mac OS dose not support silent installation.

When your PC has preinstalled OS X 10.10 or later, or has a clean installation of OS X 10.10 or later, a message may appear to confirm installation of XCode, due to the absence of lipo command implementation used by Smart Label Creator.

You do not need to install XCode. Select [Not Now].

After selecting, an error message appears, but click [Close] button to close the error message.

The installation has normally proceeded.

# Uninstall

---

The following describes how to uninstall the software.

## Windows version

### 1. Delete applications

Select "Smart Label Creator" from [Uninstall a program] in the Control panel. Click [Uninstall] and delete the applications.

### 2. Delete applications data created by the user unit.

Applications data created by the user unit in the Smart Label Creator cannot be deleted, when you only perform the operation 1. When you delete the applications, you need to delete the following files in the Explorer. Label data file and database file created by user are not included in applications data.

%USERPROFILE%\AppData\Roaming\Smart Label Creator

## Mac OS version

### 1. Move to Trash Seiko Instruments Inc folder that contains the Smart Label Creator application from Application folder.

### 2. Select [System Preferences...] from Apple Menu.

### 3. Select [Print & Scan].

### 4. Select the printer name in the list, and then click "-" in the bottom.

### 5. From Finder, etc., delete the following folders and files.

- ✓ /Applications/Seiko Instruments Inc/Smart Label Creator/
- ✓ /Library/Application Support/Smart Label Creator
- ✓ /Library/Frameworks/TBarcode.framework
- ✓ /Library/Printers/PPDs/Contents/Resources/slp440.ppd.gz
- ✓ /Library/Printers/PPDs/Contents/Resources/slp450.ppd.gz
- ✓ /Library/Printers/PPDs/Contents/Resources/slp620.ppd.gz
- ✓ /Library/Printers/PPDs/Contents/Resources/slp650.ppd.gz
- ✓ /Library/Printers/SII/SmartLabelPrinter

### 6. Execute the following commands by terminal, etc., delete the package information.

- ✓ "sudo pkgutil --forget com.seikoinstruments.SmartLabelCreator.pkg"
- ✓ "sudo pkgutil --forget com.seikoinstruments.SmartLabelPrinterDriver.pkg"

## Reference Documents

---

The following describes the reference information except this document.

- For instructions on Smart Label Creator, see Help File from the Help Menu of Smart Label Creator.
- For instructions on SDK, click [All programs] from "Windows Start Menu", and then click in order [Smart Label Printer], [Software Develop Kit], and [Application Programmer's Guide]. See Application Programmer's Guide of SDK displayed by the above procedure.

## Precautions

---

- Do not install the Smart Label (for SLP software) before version 7.1 after installing the software.
- All the software uses printer drivers for printing. Do not delete printer drivers.

## Disclaimer

---

SII has carefully designed this product to ensure that it is problem-free. However, SII is not liable for any direct, indirect, or consequential damages or loss caused by or related to the use of the software.

## Trademarks

---

©2014-2016 Seiko Instruments Inc. All rights reserved. Specifications subject to change without notice. "SII" is a registered trademark of Seiko Instruments Inc. "SMART LABEL PRINTER®" is a registered trademark.

Microsoft®, Windows Vista®, Word®, Excel®, Outlook®, Access® and Windows® are either registered trademarks or trademarks of Microsoft Corporation in the U.S.A. and other countries.

Mac OS® and OS X® are registered trademarks of Apple Inc. in the U.S.A. and other countries.



**SII**



Seiko Instruments Inc.  
1-8, Nakase, Mihama-ku, Chiba-shi,  
Chiba 261-8507, Japan  
Print System Division  
Telephone:+81-43-211-1106  
Facsimile:+81-43-211-8037

Seiko Instruments USA Inc.  
Thermal Printer Div.  
21221 S. Western Avenue, Suite 250, Torrance, CA 90501, USA  
Telephone:+1-310-517-7778 Facsimile:+1-310-517-7779

Seiko Instruments GmbH  
Siemensstrasse 9, D-63263 Neu-Isenburg, Germany  
Telephone:+49-6102-297-0 Facsimile:+49-6102-297-222

Seiko Instruments (H.K.) Ltd.  
4-5/F, Wyler Center 2,200 Tai Lin Pai Road, Kwai Chung, N.T., Kowloon, Hong Kong  
Telephone:+852-2494-5160 Facsimile:+852-2424-0901

(Specifications are subject to change without notice.)